



LASH | FACIAL | BROWS | SHR

TYPES OF TREATMENT

1. Treatment Facial - \$78 | 75 minutes

Includes detailed extractions!

Perfect deep cleansing facial for troubled skin individuals'

2. BoJing Facial - \$88 | 75 minutes

Anti-Ageing facial, perfect for saggy/ dull skin individuals giving a 'v' lifting effect!

3. Watershine BB Glow Facial - \$88 | 60 minutes

Using microneedling technique to infuse bb glow serum into the surface layer of the skin, with instant brightening effects giving off a "bb cream" look!

4. Black Carbon Laser - \$98 | 75 minutes

Suitable for enlarged pores, acne prone and irritated skin! Minimises pores, lightens pigmentation spots and reduce oil production. Improving overall skin complexion



JANILASH

lash . facial . brows

Extractions/ Treatment Facial



JANILASH

lash . facial . brows

What is it?

Traditional deep cleansing facial treatment inclusive of detailed extractions to remove your gunks!

Clogged pores, stubborn blackheads/ whiteheads?

This is for you!

Double Cleanse

Exfoliate

Detailed Extractions

Pressure Point Face Massage

Head, Shoulder, Neck Massage (Optional @ +\$20)

Customised Masking

Aftercare

UV Protect



BoJing



JANILASH

lash . facial . brows

What is it?

Using pressure point acupuncture face massage to improve blood circulation together with meridian guasha method to promote face lifting and improve saggy skin.

Double Cleanse

Exfoliate

Ultrasonic

BoJin Massage

Pressure Point Face Massage

Head, Shoulder, Neck Massage (Optional @ +\$20)

Customised Masking

Aftercare

UV Protect



JANILASH

lash . facial . brows

Benefits

1. Anti-Ageing Facial, helps improve blood circulation
2. Reduce Face Sagging
3. Promotes Face Lifting
4. Reduce Dark Eye Circles/ Eyebags

Suitable for?

1. Dull Skin/ Saggy Skin Individuals'
2. Uneven Skin Tone
3. Wrinkles and Fine Lines/ Dark Eye Circles
4. Inability to Concentrate



JANILASH

lash . facial . brows

BEFORE AFTER



JANILASH

lash . facial . brows

BEFORE *Super good bojing treatment, suitable for saggy skin 😊*



AFTER



Bojing Facial

JANILASH

- ✓ MORE OBVIOUS APPLE CHEEK BONES
- ✓ FIRMER AND "V" LIFTED FACE



BB Glow



JANILASH

lash . facial . brows

What is it?

BB Glow helps reduce the appearance of freckles and helps with the lightening of the skin. It involves microneedling a pigmented vitamin serum into the surface layer of your skin.

Each treatment will increase the density of the pigment into your skin, therefore creating more coverage

Double Cleanse

Exfoliate

Add-on: Optional Detailed Extractions/ BoJing (+\$40/ \$69)

BB Glow Ampoule

Pressure Point Face Massage

Head, Shoulder, Neck Massage (Optional @ +\$20)

Customised Masking

Aftercare

UV Protect



JANILASH

lash . facial . brows

Benefits

1. Stimulate natural collagen production and skin rejuvenation
2. Will not clog your pores or cause breakouts as the pigment is infused into your skin instead of sitting on top of your pores
3. Reduce overall redness especially for people with rosacea
4. Contains many anti-ageing ingredients, vitamins and antioxidants that will help give skin a healthier and youthful look



JANILASH

lash . facial . brows

Not Suitable for?

1. Active Acne/ Infections/ Open Wound
2. Pregnant/ Nursing Mummies
3. Skin Cancer/ Disease
4. Accutane/ Similar products within the past 6 months
5. Patients on Blood Thinners
6. Injectable Fillers within the past 2 weeks

Suitable for?

1. Dull Skin
2. Freckles, Wrinkles, Fine-Lines
3. Pigmentation Spots, Acne Scars
4. Uneven Skin Tone
5. Blemishes
6. Dark Eye Circles

FAQ!

Any Downtime?

→ No as it is non-invasive!

Suitable for sensitive skin?

→ Mild sensitive skin is okay, patch test can be done if you are concerned.
(30% charge is applicable)

Aftercare

1. Do not use facial cleansers/ moisturisers/ makeup for the next 24h
2. Sunscreen of SPF 50 to be applied daily and reapply every 2 hours
3. Avoid the sun for 2 weeks if possible
4. No scrubs, exfoliates, acid peels for 1 week
5. No strenuous exercise for 1-2 days



JANILASH

lash . facial . brows

BEFORE AFTER



JANILASH

lash . facial . brows

BEFORE



AFTER



BEFORE



AFTER



Black Carbon Laser



JANILASH

lash . facial . brows

What is it?

Revolutionary, non-invasive, painless with virtually no-downtime procedure that helps rejuvenate the appearance of aging and damaged skin.

It gently removes the top layer of skin, leaving an amazing glow with a vibrant, youthful complexion. Minimises enlarged pores, removing any dirt, oil and dead skin cells.

Double Cleanse

Exfoliate

Add-on Extractions/ BB Glow/ BoJing (Optional @ +\$40/ +\$58/ \$69)

Black Carbon Treatment

Pressure Point Face Massage

Head, Shoulder, Neck Massage (Optional @ +\$20)

Customised Mask

Aftercare

UV Protect

Benefits

- ❑ MINIMISE enlarged pores, reduces blemishes, improves acne skin
- ❑ Reducing the signs of premature aging
- ❑ Improving skin integrity and radiance
- ❑ Reducing fine lines and wrinkles
- ❑ Increasing skin tone and texture
- ❑ Stimulating collagen growth for firmer, plumper skin
- ❑ Reducing oily skin or exfoliating dry skin
- ❑ Erasing or fading yellow/brown pigmentation

Suitable for all types of acne

- ❑ Gently clear your pores to help reduce blackheads and whiteheads
- ❑ Simultaneously targets acne bacteria and shrinks your sebaceous glands for reduced oil production, congestion and outbreaks
- ❑ Decreases cyst size, papules and nodules



JANILASH

lash . facial . brows

FAQ!

How long does it lasts?

→ It will depend on the condition of your skin, your skin type and your lifestyle.

You'll probably notice results after a single treatment.

→ However, for long-term results, we recommend regular treatments ~ 4-6 treatments are optimal, spaced 2-4 weeks apart.

Aftercare

1. Sunscreen of SPF 50 to be applied daily and reapply every 2 hours
2. Avoid the sun for 2 weeks if possible
3. No scrubs, exfoliates, acid peels for 1 week



JANILASH

lash . facial . brows

BEFORE AFTER

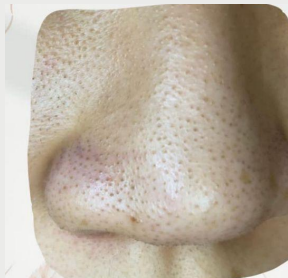


JANILASH

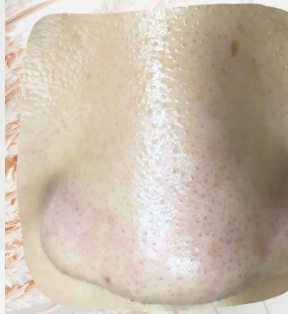
lash . facial . brows



AFTER



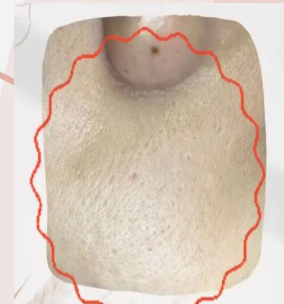
AFTER



AFTER



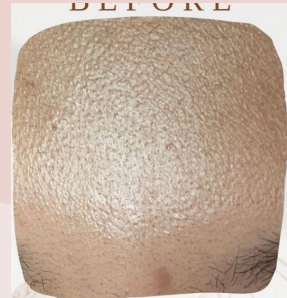
AFTER



AFTER

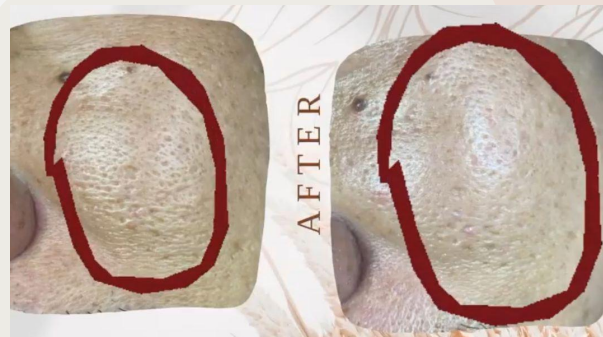
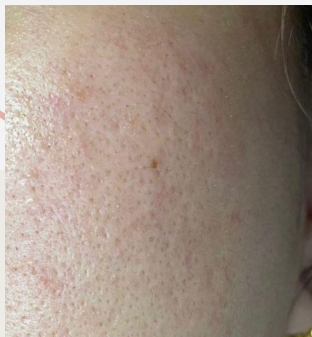
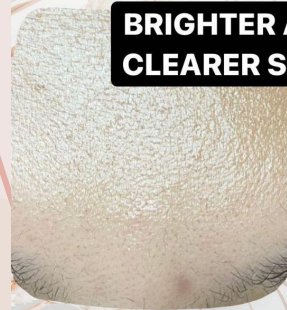


Pores minimiz



AFTER

BRIGHTER A
CLEARER SH



AFTER

Mix & Match



JANILASH

lash . facial . brows



Homecare Advice: Anti-Ageing

Suitable for Dry, Mature Skin:
Saggy, Fine Lines/ Wrinkle Reduction

ARTISTRY SKIN NUTRITION
Renewing Foaming Cleanser
\$66.00



ARTISTRY SKIN NUTRITION
Renewing Softening Toner
\$71.00



ARTISTRY SKIN NUTRITION
Renewing Reactivation Cream
\$110.00



ARTISTRY SKIN NUTRITION
Renewing Reactivation Eye Cream
\$75.00



Homecare Advice: Hydrating

Suitable for normal to dry skin in SG's weather

ARTISTRY SKIN NUTRITION
Hydrating Mousse Cleanser

\$42.00



ARTISTRY SKIN NUTRITION
Hydrating Smoothing Toner

\$45.00



ARTISTRY SKIN NUTRITION
Hydrating Day Lotion SPF 30

\$60.00



ARTISTRY SKIN NUTRITION
Hydrating Gel Cream

\$63.00



ARTISTRY SKIN NUTRITION
Hydrating Eye Gel Cream

\$60.00



Homecare Advice: Balancing

Suitable for Oily Skin

ARTISTRY SKIN NUTRITION
Balancing Jelly Cleanser

\$40.00



ARTISTRY SKIN NUTRITION
Balancing Fresh Shake Toner

\$42.00



ARTISTRY SKIN NUTRITION
Balancing Matte Gel Lotion

\$60.00



JANILASH

lash . facial . brows

Homecare Advice: Essentials

ARTISTRY SIGNATURE SELECT Firming Mask

\$60.00



ARTISTRY SIGNATURE SELECT Purifying Mask

\$50.00



ARTISTRY SIGNATURE SELECT Polishing Mask

\$50.00



ARTISTRY SIGNATURE SELECT Brightening Mask

\$60.00



ARTISTRY Phyto UV Protect

\$65.00



ARTISTRY SIGNATURE SELECT Hydrating Mask

\$60.00



Thank
You!

